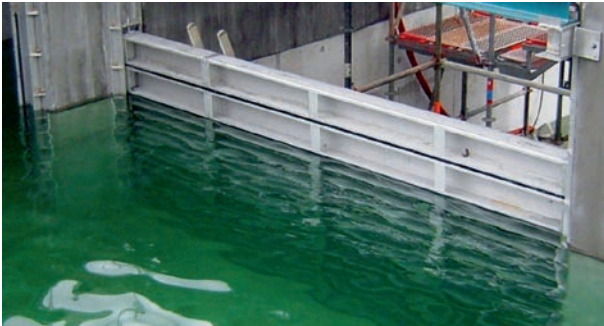


# IBS Flow Control Stop Logs



- › Vast Product Range
- › Standard Solutions
- › Use In New and Existing Structures
- › Competitive Series Production
- › Extensive Experience



## Stop Log Technique

### Our Experience - Your Advantage

- › Qualified
- › Knowledgeable
- › Reliable
- › Flexible
- › International

### Quality Standards

- › DIN
- › BSI
- › AWWA
- › EN 1090 Certification
- › Welder Certification

### Lage Sizes Available

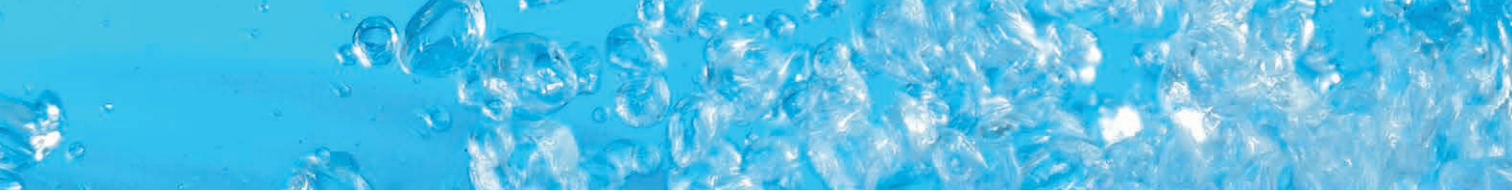
e.g. RWE Hydro Power Plant Hohenstein

- › Width = 8.400mm
- › Height = 7.300mm
- › Water Head = 7.300mm

### Area of Application

- › Waste Water Treatment Plants
- › Industrial Effluent Plants
- › Canals / Waterways
- › Flood Defence
- › Retention Tanks
- › Pumping Stations
- › Hydro Power Plants
- › Drinking Water Plants
- › Sea Water Intakes





## Our Products

### Stop Log Categories

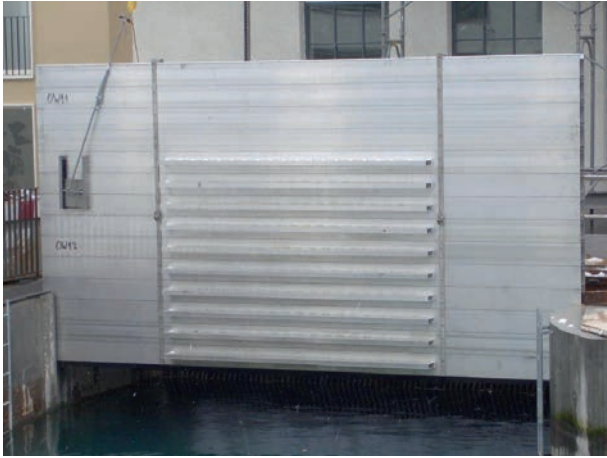
- > IBS-DBV 50
- > IBS-DBV 100
- > IBS-DBV 150

### Materials

- > Stainless Steel Grade SS304
- > Stainless Steel Grade SS316
- > Aluminium EN AW 6063 T66
- > Seals EPDM (Waste Water Resistant)
- > Seals Elastosil (KTW/WRAS Approved)
- > Further materials available upon request



Area of Application	Stainless Steel	Aluminium
Inland Water	yes	yes
Grey Water	yes	yes
Waste Water	yes	limited
Sea Water	yes	limited
Drinking Water	yes	no
Reinforced Stop Log Solutions	no	yes
Log Mounted Sealing Techniques	no	yes



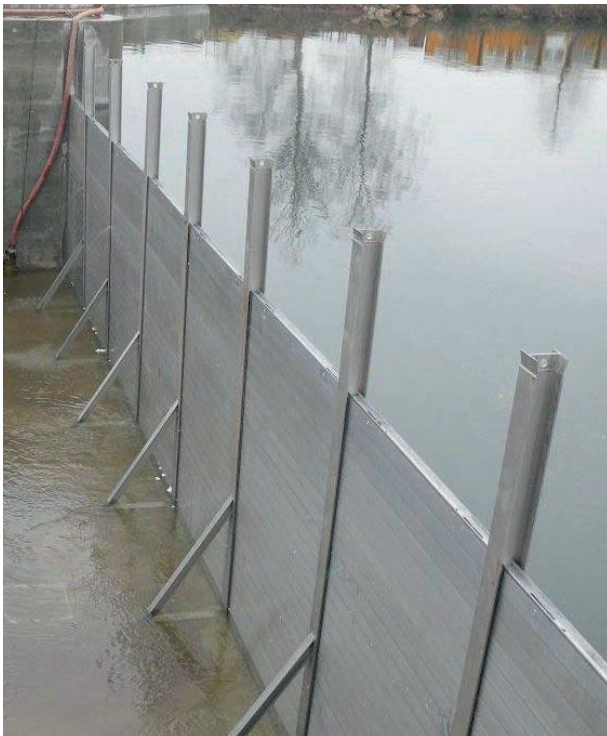
## Sealing Techniques

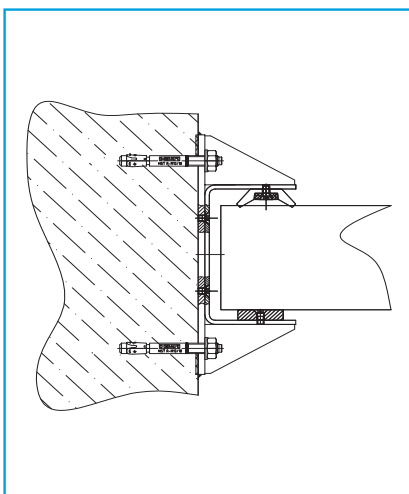
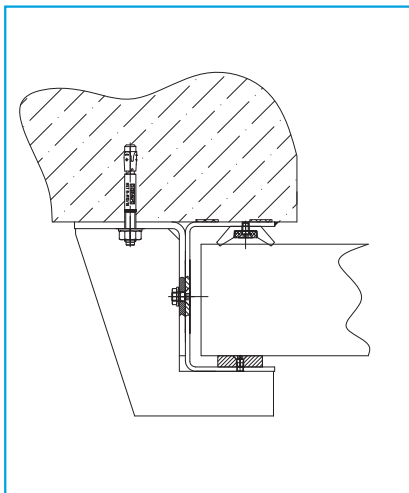
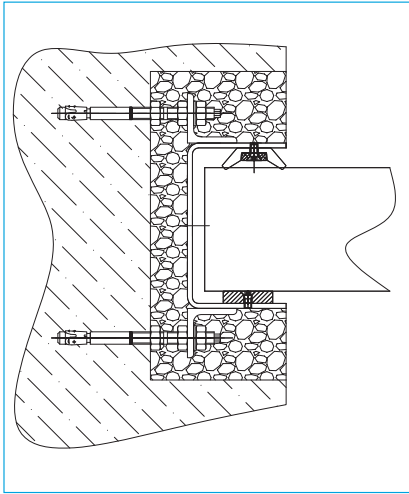
### Frame Mounted

- › Seals and Guides Frame Mounted
- › Double Lip Seal
- › High Performance Guides
- › On and Off-Seating Design
- › Uninterrupted Sealing Line

### Log Mounted

- › Seals and Guides Log Mounted
- › Combination Profile Seal
- › High Performance Guides
- › On and Off-Seating Design
- › Excellent Seal Accessibility





## Mounting Types

### Side Frame Mounting Types

- › In Rebate
- › Wall Mounted On and Off-Seating
- › Channel Side Wall Mounted

### Invert Frame Mounting Types

- › In Rebate
- › Wall Mounted
- › Floor Mounted
- › Flexible IBS Ground Seal Only

## Accessories

### Vertical Log Compression

- › Typ 1: Integral In Frame
- › Typ 2: External To Frame

### Lifting Tools

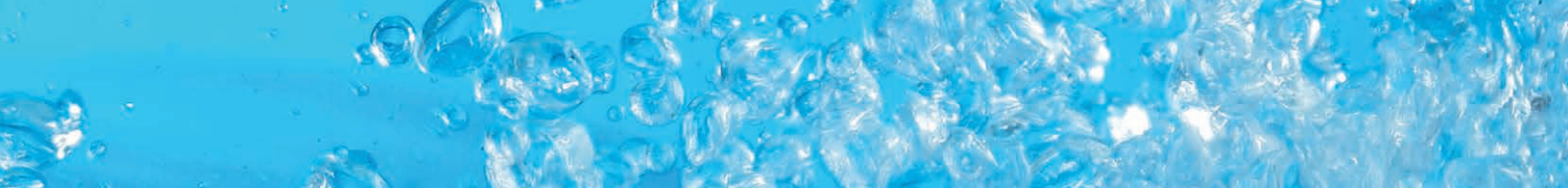
- › Lifting Tools
- › Hook Lifting Beams
- › Semi-Automatic Lifting Beams

### Storage Solutions

- › Pallets
- › Racks
- › Boxes







## IBS GROUP

### Our Production Facilities

- > IBS Technics GmbH Thierhaupten
- > IBS Technics s.r.o. Rotava
- > IBS Engineered Products Ltd. Barnsley

### About Us

- > International Engineering Company
- > 150 employees
- > 11,000 m<sup>2</sup> manufacturing facilities
- > global leader for mobile flood water protection
- > more than 4000 successfully completed projects

### Our Performance

- > Global distribution
- > Development, design and construction
- > State of the art production
- > Modern machinery
- > International service structure

### Our Markets

- > Europe
- > Middle East
- > North America
- > Australia
- > Asia

**IBSI GROUP**  
 WWW.IBS-TECHNICS.DE

**IBSI GROUP**  
 WWW.IBSENGINEEREDPRODUCTS.CO.UK

**IBS Technics GmbH**  
 Gemeindewald 6 · 86672 Thierhaupten · Germany  
 Tel.: + 49 (0) 8271 8176-0 · Fax: + 49 (0) 8271 8176-76  
 Mail: info@ibs-technics.de · Web: www.ibs-technics.de

Unit 7 · Longfields Court · Middlewoods Way  
 Wharnccliffe Business Park · Carlton, Barnsley · S71 3GN  
 Phone: +44 1226 6300-15 · Fax: +44 1226 6300-14  
 info@ibsengeeredproducts.com · www.ibsengeeredproducts.co.uk