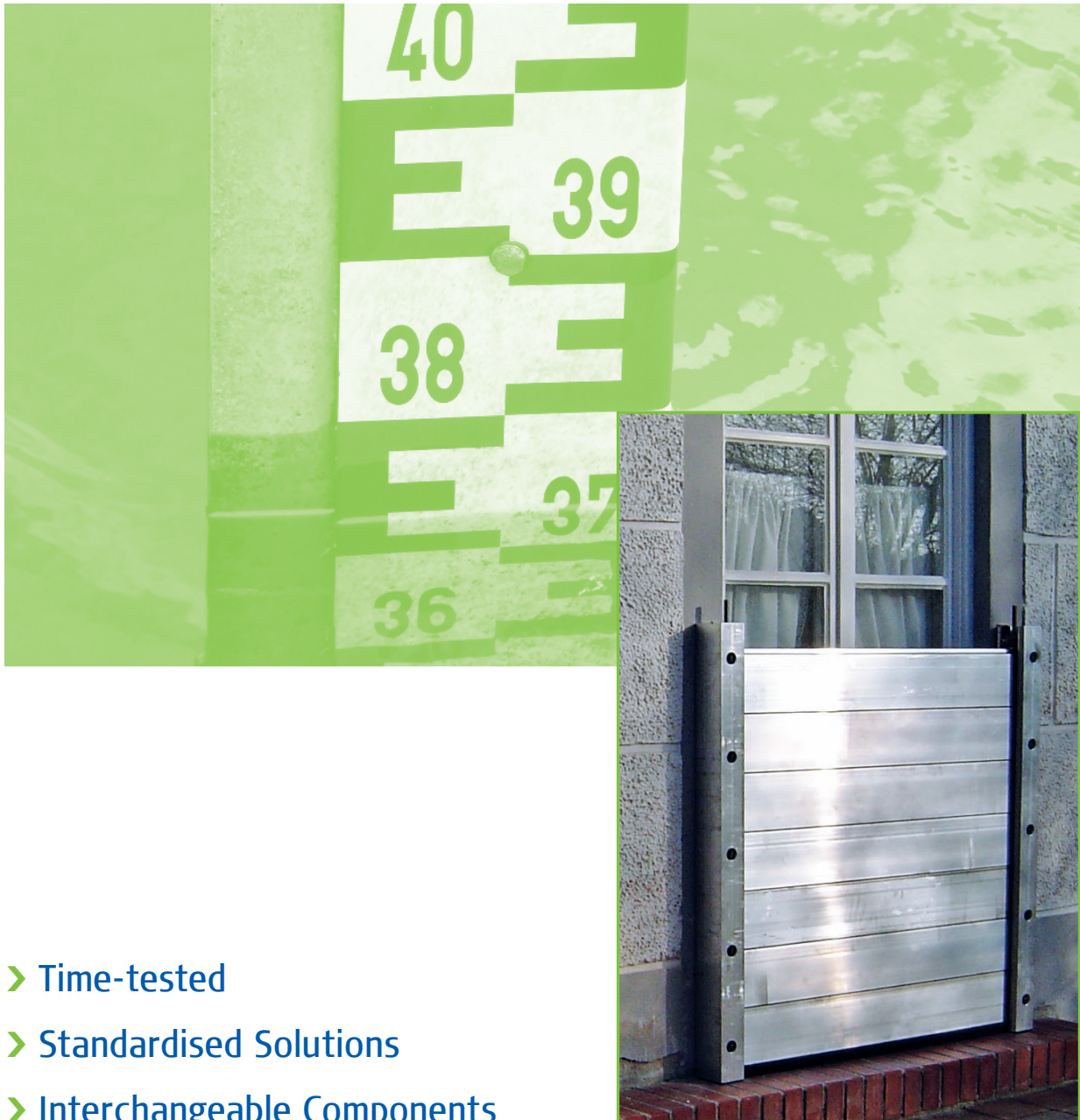
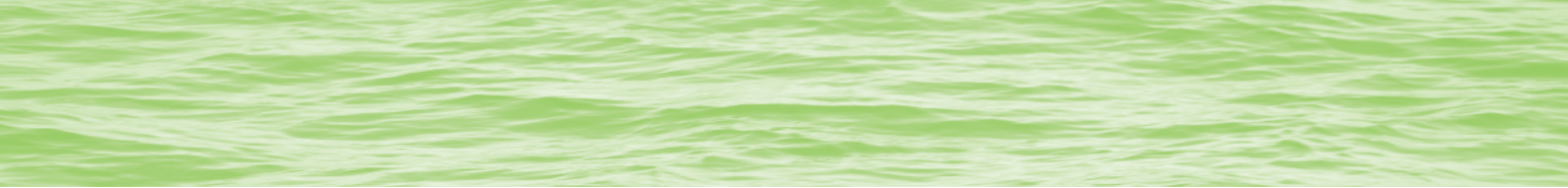


IBS Flood Protection Object Protection



- › Time-tested
- › Standardised Solutions
- › Interchangeable Components
- › Economic Serial Production
- › Complete Portfolio of Solutions



Object Protection from IBS

Our Experience - Your Advantage

- Capable
- Reliable
- International
- Qualified
- Flexible

Quality Standards

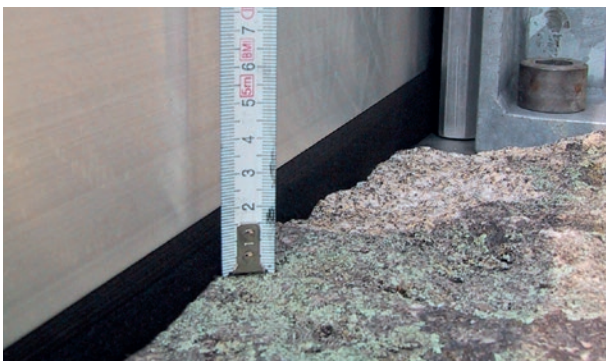
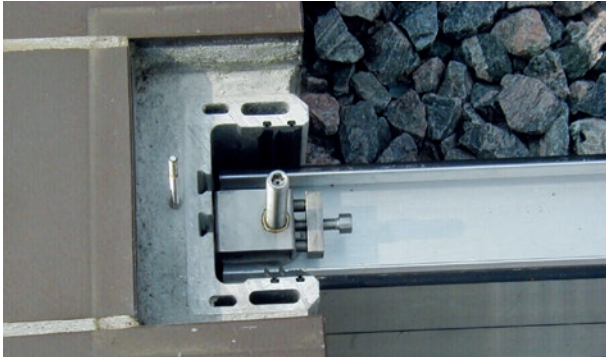
- DIN (German Industrial Standard)
- EN 1090
- industrial production
- Certified Welding Specialists

Sizes

- Unlimited Demountable Wall Length
- Standard Demountable Sizes up to a Height of 3,000mm
- Special Designs and Sizes on Request

Area of Application

- Domestic Households
- Industrial Buildings
- Commercial Premises
- Utility Sites
- Public Spaces



Our Products

Flood Barrier Systems

- › HW-B50 H (single field barrier)
- › HW-W50 L/LU (multiple field flood wall)
- › HW-B100 L (single field barrier)
- › HW-W100 L/LU (multiple field flood wall)
- › HW-W150 B (single field barrier)
- › System Thickness Variants: 50 mm, 100 mm and 150 mm

System Components

- › End Posts (Material: Aluminium. Suitable covers available)
- › Dam Beams (available in three different thicknesses)
- › Ground Seal (flexible, compressible)
- › Pressing Tools (Material Stainless Steel 1.4301/SS304)
- › Centre Posts (Material: Aluminium, only for flood walls)
- › Anchor Plates (Material: Stainless Steel 1.4301/SS304, only for flood walls)

Materials

- › Stainless Steel Grade: 1.4301 / SS304
- › Stainless Steel Grade: 1.4404 / SS316L
- › Aluminium EN AW 6063 T66
- › Seals: EPDM (wastewater resistant)
- › Other Materials on request

Mounting Situations

- › Side wall mounted
- › Wall-mounted on-seating
- › Wall-mounted off-seating
- › In rebate
- › Special mounting, e.g. angled, on request



Hatches & Plates

IBS Flood Hatches

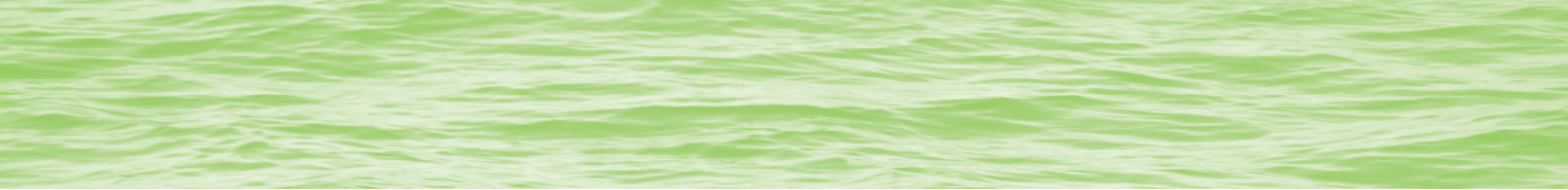
Typen: FHZS L/R/O/U

- Minimum size: 500 mm Wide x 500 mm High
- Maximum size: 1,200 mm Wide x 1,200 mm High
- Design Water Head: Max. 2,000 mm (On or Off-Seating)
- Opening Angle: 0° - 180°
- Frame Material: Mild Steel S235, primed
- Leaf Material: Mild Steel S235, primed
- Hinge Material: Mild Steel S235, primed
- Hinge Pins Material: Stainless Steel 1.4301 (SS304)
- Seal Material: EPDM

IBS Flood Plates

Types: FPD T1/T2

- Minimum size: 500 mm Wide x 500 mm High
- Maximum size: 1,000 mm Wide x 1,000 mm High
- Design Water Head: Max. 2,000 mm (On-Seating only)
- Plate Material: Aluminium EN AW 5754
- Seal Material: PVC
- Bolts: M12x40 - 8.8, galvanized



IBS GROUP

Our Production Facilities

- › IBS Technics GmbH Thierhaupten
- › IBS Technics s.r.o. Rotava
- › IBS Engineered Products Ltd. Barnsley

About Us

- › International Engineering Company
- › 150 employees
- › 11,000 m² manufacturing facilities
- › global leader for mobile flood water protection
- › more than 4000 successfully completed projects

Our Performance

- › Global distribution
- › Development, design and construction
- › State of the art production
- › Modern machinery
- › International service structure

Our Markets

- › Europe
- › Middle East
- › North America
- › Australia
- › Asia

IBS GROUP
 WWW.IBS-TECHNICS.DE

IBS Technics GmbH

Gemeindewald 6 · 86672 Thierhaupten · Germany
 Tel.: + 49 (0) 8271 8176-0 · Fax: + 49 (0) 8271 8176-76
 Mail: info@ibs-technics.de · Web: www.ibs-technics.de

IBS GROUP
 WWW.IBSENGINEEREDPRODUCTS.CO.UK

Unit 7 · Longfields Court · Middlewoods Way
 Wharnccliffe Business Park · Carlton, Barnsley · S71 3GN
 Phone: +44 1226 6300-15 · Fax: +44 1226 6300-14
 info@ibsengeeredproducts.com · www.ibsengeeredproducts.co.uk